

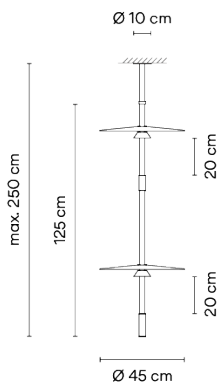
Flamingo mini

1590

Design By Antoni Arola

Flamingo Mini offers an attenuated lighting through its different translucent diffusers, this model invites users to choose between a variety of different configurations thanks to the three installation options.

Model Sheet



Optional: Extra cable length
Min. quantity, upcharge and extra lead time apply

Finish	11 Black NCS S 8500-N
LED temperature color	2700 K
Dimming	Casambi / Push; 1-10V / DALI
Installation type	Surface Canopy / Built-in XS

Materials	Body: Aluminum Shade: PMMA Diffuser: PC- Polycarbonate
Light source	3 x LED 3W 185mA E
LED	CRI>90 1152 lm 132 2700 K
Driver	Constant Current 350 110~240 V V 50~60 Hz HZ

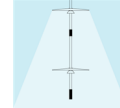
☐ IP20 ☒ Bi-volt ☒ 50-60Hz

Application	Hanging lamps
Packaging	2 Box 0.51 m x 0.51 m x 0.165 m Gross weight 6.5 Net weight 5 Vol. 0.0502

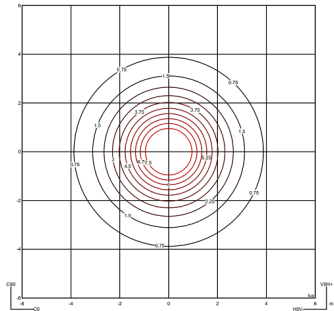
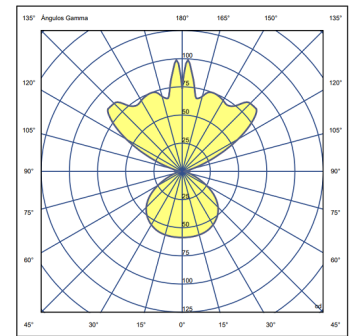
Lighting effect

Volumetric Diffuser

Subtly directed, diffused light that generates a soft hierarchy of light on to the illuminated surface



Photometric Data



All of our products come with a five-year warranty. Check our legal terms at www.vibia.com/warranty

Vibia Lighting, S.L.U.

Office / Oficina
Progrés 4-6. 08850 Gavà. Barcelona, Spain.

International T +34 934 796 971
Spain / Portugal T +34 934 796 970

customer.service@vibia.com
vibia.com